

EXPLORER

A photograph of a swimming pool with blue water, wooden decking, and yellow pipes. The water is clear and reflects the light, creating a shimmering effect. The wooden decking is made of dark brown planks. The yellow pipes are connected to the pool's filtration system.

ISSUE 72 AUGUST 2008 WWW.EXPLORERMAGAZINE.CO.UK CAMBRIDGE **FREE**

WIN! A YEAR'S MEMBERSHIP AT GREENS HEALTH AND FITNESS

SUMMER SHOPPING SPECIAL

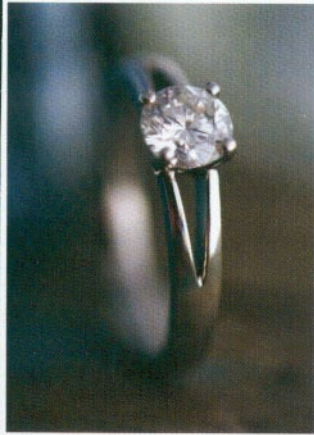
THE PINK FESTIVAL

JESUS GREEN LIVE

MUSIC! ART! STAGE! CLUBS! FOOD AND DRINK! HEALTH AND BEAUTY!

WIN! MEALS AT ALIMENTUM, DOUBLETREE BY HILTON, AND MOUTH MUSIC

FREE MONTHLY WHAT'S ON MAGAZINE



HARRIET KELSALL JEWELLERY DESIGN

Your own jewellery designs made
by master craftsmen

Harriet Kelsall has been designing and making unique engagement, wedding and eternity rings for ten years. At her shop in Green Street you can meet one of her team of award-winning designers to design your personal piece of bespoke jewellery, which is then hand-made by master craftsmen in their Tudor barn workshop in the local countryside. The rings are all unique designs – they'll never make another the same for anyone else, and they source unusual gems

from small dealers all over the world, including recycled diamonds for the eco-conscious. If you'd rather browse and try on lots of rings there are plenty of ready-to-wear engagement and wedding rings in the store too, and if you're not getting married right now there's a colourful, well-designed range of dress jewellery called Purple Label, which is hand-made in small batches in Cambridge and is perfect for everyday wear and presents.

*Harriet Kelsall Jewellery Design,
6-7 Green St, T:01223 461 333,
www.hkjewellery.co.uk*

